

IN COLLABORATION WITH



THANKS TO OUR SCIENCE AND TECHNOLOGY PARTNERS FOR THEIR SUPPORT

ALZHEIMER'S RESEARCH UK FOR A CURE

BIOS

bit.bio
THE CELL CODING COMPANY



Celestial Health

Gurdon INSTITUTE

illumina

OrcaScan

Qualcomm



Shefali Bijsa

Snapdragon

SUPERSENSE TECHNOLOGIES

SUPERSHARP

THE POLAR MUSEUM
Scott Polar Research Institute

UNIVERSITY OF CAMBRIDGE | CAMBRIDGE FESTIVAL

UNIVERSITY OF CAMBRIDGE
Institute of Astronomy

DISCOVER GIANT DIGITAL SCULPTURES HIDDEN IN GRAND ARCADE!

Alongside the Grand Discoveries sculptures, follow the Cambridge ReseARch Trail!

An AR experience commissioned by UNIVERSITY OF CAMBRIDGE | CAMBRIDGE FESTIVAL

Unravel DNA, explore cancer breakthroughs, and more through interactive digital sculptures.

Scan the QR codes around Grand Arcade with the AR Trail app, and step into groundbreaking research brought to life.

Download the app **Cambridge AR Trail** from the relevant app store.

illumina

Illumina delivers breakthroughs that redefine what's possible in genomics and empower visionaries around the globe to make life-changing advances that improve human health.

Download their free STEM educational resources.



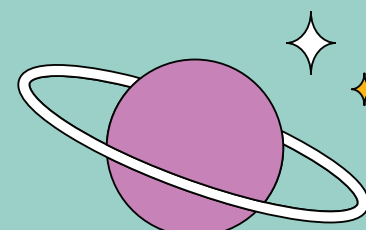
GRAND DISCOVERIES

WORKSHOPS PROGRAMME:

Location: Grand Discoveries Hub, next to Raspberry Pi Shop, on the First Floor

SPACE DAY THE GREAT ALIEN HUNT

by UNIVERSITY OF CAMBRIDGE
Institute of Astronomy



Saturday 23rd August, 10:00 – 16:00

30-minute educative workshops at the start of every hour, followed by craft activities.

Join astronomer and author Matt Bothwell on an exciting journey to the stars!

In this fun and interactive family workshop, children and adults alike will explore the fascinating science behind the search for planets beyond our Solar System. Discover how astronomers find distant exoplanets, learn how we search for signs of life on other worlds, and hear about the latest discoveries from cutting-edge space telescopes. With hands-on activities and plenty of opportunities to ask questions, this workshop brings the wonders of the Universe to life for curious minds of all ages.

£4 per person.

All proceeds will go to Cambridge Carbon Footprint charity.

BRICKS OF BIOLOGY SCIENCE YOU CAN SNAP TOGETHER

by bit.bio
THE CELL CODING COMPANY



Saturday 26th July, 2nd August, 9th August, 16th August, 30th August, 6th September, 13th September, 20th September

Bring the whole family to build human cells with LEGO® bricks*, learn about their functions and be in with a chance of winning your own building kit!

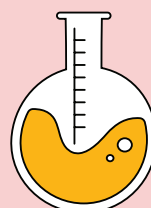
Enjoy neuroscience-inspired colouring sheets and craft challenges too.

Adults are also welcome to join the 'race the clock' challenge.

£4 per person.

All proceeds will help fund neuroscience research at Alzheimer's Research UK.

*LEGO® is a registered trademark of the LEGO Group and is not affiliated with this workshop.



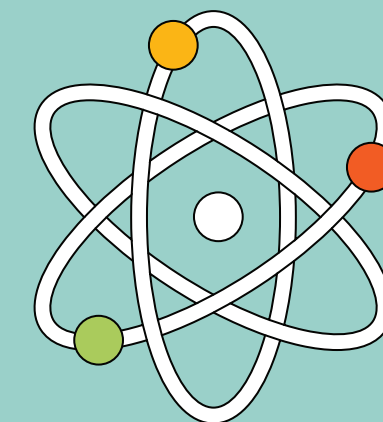
BOOK WORKSHOPS



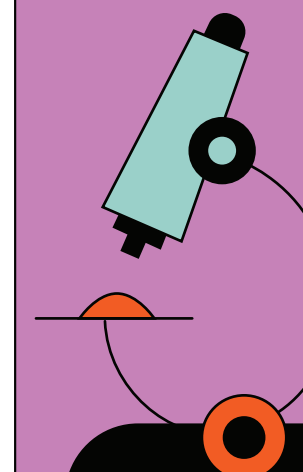
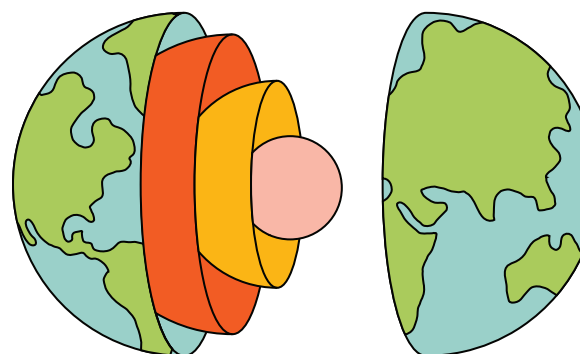
GRAND ARCADE
CAMBRIDGE

GRAND DISCOVERIES

EXPLORE ICONIC CAMBRIDGE SCIENCE
DISCOVERIES AT GRAND ARCADE



24 JULY
TO
25 SEPT



grandarcade.co.uk

WHERE DID THEY MAKE
THOSE

GRAND DISCOVERIES?

There are countless other remarkable individuals and their breakthroughs that deserve recognition. Grand Arcade's exhibition highlights only a selection of brilliant minds and their discoveries from Cambridge. While we aimed to include notable contributions, it is important to recognise that this representation is not exhaustive.



INSTITUTE OF ASTRONOMY
Public Open Evenings
Every Wednesday, October – March

CHURCHILL COLLEGE
Where Professor Wolfram Schultz conducts his neuroscience research and made discoveries about how the brain makes decisions.

TRINITY COLLEGE
Where Isaac Newton studied from 1661 to 1665 various subjects, including mathematics, physics, and astronomy. His early contributions at the college set the stage for his future breakthroughs such as the Theory of Universal Gravitation.
Where Alan Lloyd Hodgkin and Andrew Fielding Huxley studied Physiology. They jointly won the Nobel Prize in Physiology or Medicine in 1963 for their discoveries about the signals coming from nerve cells.
Srinivasa Ramanujan was the first Indian to be elected a Fellow of Trinity College. He found the fundamentals around the numbers and mathematics that we use today.
Where Stephen Hawking was a PhD Student in applied mathematics and theoretical physics. His thesis was titled 'Properties of Expanding Universes'.

ST JOHN'S COLLEGE
Usha Goswami is Professor of Cognitive Developmental Neuroscience and Fellow of St John's College. She is pioneering our understanding of how babies' brains work and develop.

CAMBRIDGE SCIENCE CENTRE
Cambridge Science Centre exists to increase access to STEM. We see a future where all young people can enjoy, explore, and shape a better world through STEM. We're proud to be experimental, innovative and work with partners and academics to showcase cutting-edge science.
cambridgesciencecentre.org

SCIENCE PARK
Europe's oldest science park (founded in 1970 by Trinity College), now spans 152 acres and hosts over 170 cutting-edge businesses - from startups to global multinationals - powering innovation in biotech, IT, clean tech and more.

THE WREN LIBRARY
Where a first edition copy of Newton's Philosophiæ Naturalis Principia Mathematica is kept.

CAMBRIDGE UNIVERSITY LIBRARY
Where the personal papers of Charles Darwin, Isaac Newton and Stephen Hawking are housed – including over 9,000 letters that Charles Darwin exchanged with around 2,000 correspondents all over the world.

GONVILLE & CAIUS COLLEGE
On completion of his PhD at Trinity College, Stephen Hawking became a research fellow at Gonville and Caius College, where he remained a fellow for the rest of his life.

CHRIST'S COLLEGE
Where Charles Darwin was a student between 1827-1831, before setting off on the famous voyage around the world.

MUSEUM OF ZOOLOGY
Where one of the largest collections of Charles Darwin's own specimens can be found.

SEDGWICK MUSEUM
Where you can find some of the rocks that Charles Darwin sent back from his voyage aboard HMS Beagle, including some that he tasted to help identify their mineral content!

THE POLAR MUSEUM AT THE SCOTT POLAR RESEARCH INSTITUTE
Where you can find out about Captain Robert Scott and his team's amazing discoveries in Antarctica.
Including unearthing fossil trees – proving that Antarctica was once part of a supercontinent called Gondwana.

CAMBRIDGE UNIVERSITY BOTANIC GARDEN
Where there was a supposed ancestor of Newton's famous apple tree until it fell in a storm in February 2022.
Where plant specimens from Darwin's voyage are precious conserved at the Cambridge University Herbarium.

GURDON INSTITUTE
Anne McLaren made fundamental advances in genetics which paved the way for the development of in vitro fertilisation.

WHIPPLE MUSEUM
Where one of Charles Darwin's well-loved microscopes used for observing barnacles and plants can be found.

CAVENDISH LABORATORY
Where Ernest Rutherford, often referred to as the "father of nuclear physics", conducted his groundbreaking experiments on radioactivity and atomic structure.
Where Francis Crick and James Watson first met. Their collaboration led to the discovery of the structure of DNA.

THE EAGLE PUB
Where Francis Crick and James Watson were meeting and discussing their research about DNA. It was there in 1953, that they first announced their discovery of how DNA carries genetic information.

NEWNHAM COLLEGE
Where Rosalind Franklin studied in 1938. This college was established in 1871, as a women's college at a time when women were not allowed to attend the University. Her work was instrumental in the discovery of DNA.